



Beaufort County Public Works *Stormwater Infrastructure* Project Summary

Project Summary: Marsh Drive

Narrative Description of Project:

Cleaned various areas of 10,767 L.F. of valley drains.

Completion: Jun-12

2012-602 / Marsh Drive	Labor Hours	Labor Cost	Equipment Cost	Material Cost	Contractor Cost	Indirect Labor	Total Cost
AUDIT / Audit Project	0.5	\$10.24	\$0.00	\$0.00	\$0.00	\$0.00	\$10.24
HAUL / Hauling	23.0	\$492.66	\$306.13	\$147.60	\$0.00	\$0.00	\$946.39
RS / Road Sweep	74.0	\$1,580.12	\$296.79	\$178.35	\$0.00	\$0.00	\$2,055.26
SCO / Swale - Cleaned Out	12.0	\$275.36	\$16.28	\$10.80	\$0.00	\$0.00	\$302.44
Indirect Labor, Services and Supplies	0.0	\$0.00	\$0.00	\$0.00	\$0.00	\$1,583.75	\$1,583.75
2012-602 / Marsh Drive	109.5	\$2,358.38	\$619.20	\$336.75	\$0.00	\$1,583.75	\$4,898.08
Sub Total							
 Grand Total	 109.5	 \$2,358.38	 \$619.20	 \$336.75	 \$0.00	 \$1,583.75	 \$4,898.08

Before

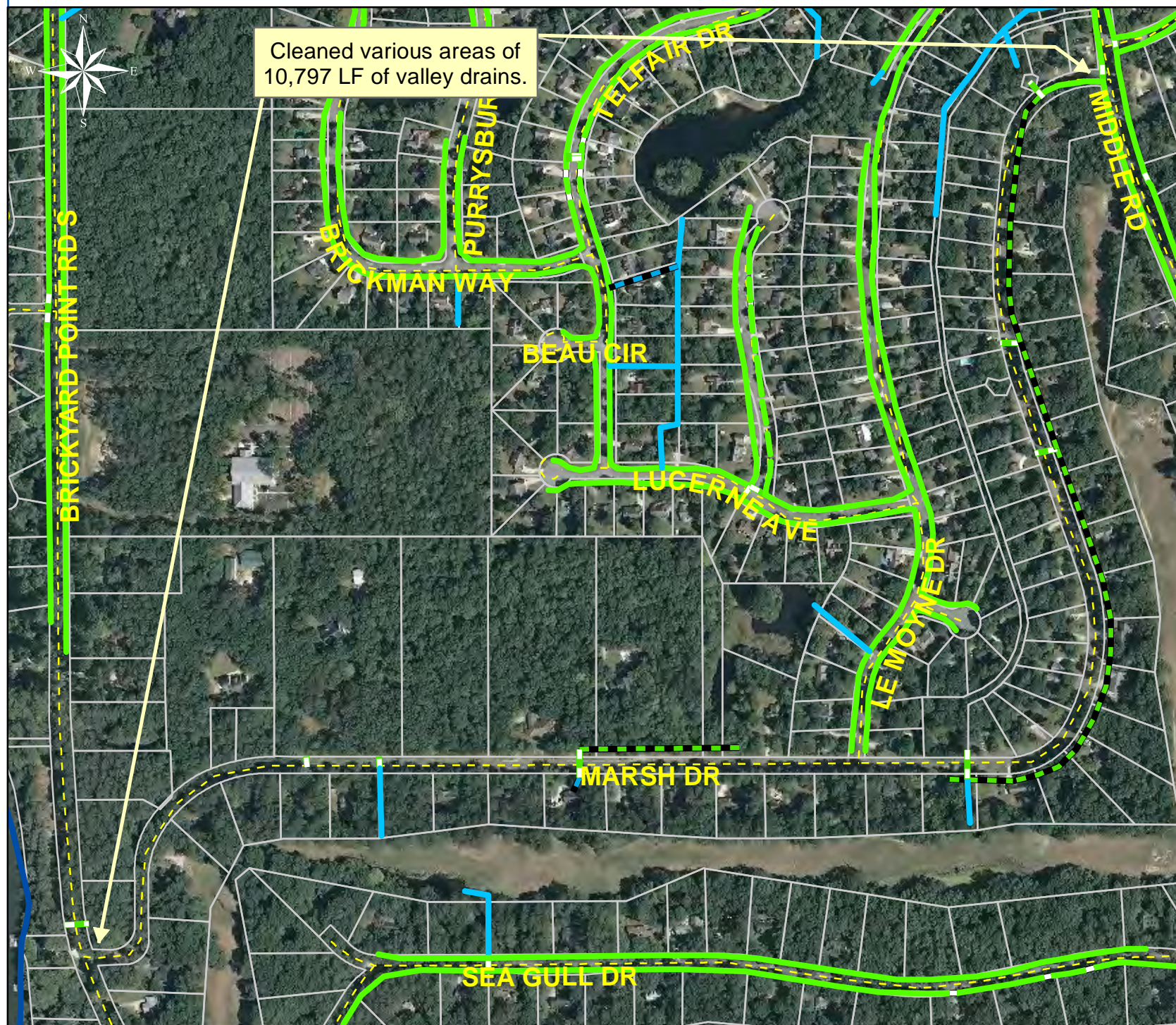


During



After





Project: Marsh Drive

Activity: Drainage Maintenance

Project #: 2012-602

Township: Lady's Island

Completed: June 2012

Legend

Drainage Type

- River
- Stream
- Outfall
- Lateral
- Lateral Pipe
- Roadside
- Roadside Pipe
- Crossline
- D/W
- Access
- Piped
- Bleeder
- Parcels

